

# Good eating



**ESSENTIALS  
OF CHOOSING  
HEALTHY FOOD**

**G**ood food tastes delicious, adds pleasure to life and helps us celebrate important social occasions. Most importantly it gives us the energy and nutrients to stay alive and to truly thrive. What you eat can help you stay healthy and feel great! Healthy eating also plays an important role in maintaining your body's health and preventing diseases such as heart disease, diabetes and some cancers.<sup>1</sup> They say "You are what you eat"—so what is good nutrition? And how does choosing to eat healthy foods really make a difference to our lives?

In modern society, with advancing social media and faster wireless internet connections from our smart phones, tablets and laptops, it is not hard to get your hands on an abundance of nutritional information with a simple click of the mouse or swipe of the screen. The latest food trends, fad diets, detox diets and glorified food products are never far from reach and can be tempting in a society that craves instant results. This makes it more and more difficult to dissect fact from fiction. Always be sure to remember that fad diets and extreme approaches to eating do not work long term—which means they don't work. This booklet will not only help you understand why you should eat healthy foods, but how much and what types are most appropriate for you.





## WHY IS HEALTHY EATING IMPORTANT?

Eating a well balanced diet can:<sup>1</sup>

- ✓ Provide all the essential nutrients you need to ensure adequate nutrition
- ✓ Give you vitality and energy
- ✓ Help you maintain your weight
- ✓ Boost your immune system
- ✓ Protect against chronic lifestyle diseases like cardiovascular disease, diabetes, osteoporosis, cancer etc.
- ✓ Delay the effects of ageing
- ✓ Build strong, dense bones
- ✓ Improve performance when engaging in physical activity
- ✓ Improve oral health by protecting teeth and keeping gums healthy
- ✓ Boost mood, memory and concentration





## Recommended dietary guidelines<sup>2</sup>

1.

**To achieve and maintain a healthy weight, be physically active and choose amounts of nutritious food and drinks to meet your energy needs.**

- **CHILDREN AND ADOLESCENTS** should eat sufficient nutritious foods to grow and develop normally. They should be physically active every day and their growth should be checked regularly.
- **OLDER PEOPLE** should eat nutritious foods and keep physically active to help maintain muscle strength and a healthy weight.

2.

- **Enjoy a wide variety of nutritious foods from these five food groups every day:**
- Plenty of vegetables of different types and colours, and legumes/beans
- Fruit
- Grain (cereal) foods, mostly wholegrain and/or high cereal fibre varieties, such as breads, cereals, rice, pasta, noodles, polenta, couscous, oats, quinoa and barley
- Eggs, tofu, nuts and seeds, legumes/beans and if not a vegetarian, lean meats, poultry and fish
- Milk, yoghurt, soft cheeses and/or their alternatives

And drink plenty of water.

3.

**Limit intake of foods high in saturated fat, added salt, added sugars and alcohol.**

- a) Limit intake of foods high in saturated fat such as many biscuits, cakes, pastries, pies, processed meats, commercial burgers, pizza, fried foods, potato chips, crisps and other savoury snacks.
  - Replace high fat foods which contain predominately saturated fats such as butter, cream, cooking margarine, coconut and palm oil with foods which contain predominately polyunsaturated and monounsaturated fats such as oils, spreads, nut butters/pastes and avocado.
  - Low fat foods (such as skim milk) are not suitable for children under the age of two years as they are still experiencing high growth and development.
- b) Limit intake of foods and drinks containing added salt.
  - Read labels to choose lower sodium options among similar foods.
  - Do not add salt to foods in cooking or at the table.
- c) Limit intake of foods and drinks containing added sugars such as confectionary, sugar-sweetened soft drinks and cordials, fruit drinks, vitamin waters, energy and sports drinks.
- d) Avoid alcohol. If you choose to drink alcohol, limit intake. For women who are pregnant, planning a pregnancy or breastfeeding, not drinking alcohol is the safest option.

4.

**Encourage, support and promote breastfeeding.**

5.

**Care for your food and prepare and store it safely.**





## *What should I be eating?*

**T**he key to good eating is to enjoy a variety of nutritious foods from each of the five food groups and drink plenty of water. For some people, healthy eating does not come naturally. It takes planning and preparation. Use the information below to help solidify your healthy eating plans.

### *Vegetables, legumes and beans*

Most of us know that vegetables, legumes, and beans are good for us, so why is it that 90% of us don't eat enough vegetables?<sup>3</sup> In 2009/10, Australian households spent an average of \$237 a week on food and beverages. Of this, about \$63 was spent on food prepared outside the home (restaurants and takeaways), and \$32 a week on alcoholic drinks. Meat, fish and seafood collectively accounted for \$30 a week on average.<sup>3</sup> The foods we choose are influenced by many factors such as price, availability, culture, personal preferences, and health and nutrition concerns. Vegetables are cost effective as they provide a high level of nutrients for generally very low kilojoules. They provide an array of vitamins, minerals, dietary fibre and phytonutrients (nutrients naturally present in plants).<sup>4</sup> Different vegetables, legumes, and beans contribute in different ways, making variety crucial to good health.<sup>5</sup>



Choosing different colours is one way to do this, so make sure your plate has at least three different coloured vegetables every day.

Eating a mixture of fresh salads and cooked vegetables is good for a healthy boost in vitamins and anti-oxidants.<sup>6</sup> Cooked vegetables make certain nutrients easier for the body to absorb. For example, beta-carotene and lycopene are better absorbed from cooked carrots and tomatoes than when raw. In fact, adding some olive oil during cooking can further improve their biological availability; but remember to not heat the olive oil beyond its smoke point.<sup>1</sup> Remember to maximise your nutrition from cooked vegetables by cooking them until just tender, don't keep them warm for long periods of time and use minimal water.

Legumes (also known as pulses) are beans, peas and lentils, and can be found dried, canned, cooked or frozen. Examples include soya beans, red kidney beans, chickpeas, red lentils, mung beans, peanuts or split peas. There is consistent evidence from population health (epidemiological) studies that shows that eating legumes can play a role in reducing the risk of chronic disease, including cardiovascular disease, diabetes and becoming overweight, as well as improving gut health.<sup>7</sup> They are nutritional powerhouses filled with phytochemicals (class of natural molecules with multiple health benefits) and dietary fibre. Legumes are low in fat and contain a source of B vitamins, as well as a range of minerals including calcium, potassium, phosphorus and magnesium. They are a source of energy giving carbohydrates, with a low glycemic index rating. Legumes are also low in sodium and naturally gluten-free (great for those with coeliac disease or gluten intolerance).<sup>8,9</sup>

HOW MANY DO I NEED PER DAY?<sup>2</sup>

The minimum recommended number of serves of vegetables per day can be found on the table below.

	19-50 years	51-70 years	70+ years			
Men	6	5 ½	5			
Women	5	5	5			
Pregnant women	5	-	-			
Breastfeeding women	7 ½	-	-			
	2-3 years	4-8 years	9-11 years	12-13 years	14-18 years	
Boys	2 ½	4 ½	5	5 ½	5 ½	
Girls	2 ½	4 ½	5	5	5	



WHAT IS A STANDARD SERVE?<sup>2,10</sup>

A standard serve of vegetables is about 75g (100-350kJ) or:

- ½ cup cooked green or orange vegetables (broccoli, spinach, carrot, pumpkin etc.)
- ½ cup cooked, dried or canned beans, peas or lentils
- 1 cup green leafy or raw salad vegetables
- ½ cup sweet corn
- ½ medium potato or other starchy vegetable (sweet potato, cassava, taro etc.)
- 1 medium tomato



# Fruit

Most Australians eat only half the recommended quantity of fruit.<sup>3</sup> However, many of us prefer to drink our fruit in the form of fruit juice. This unfortunately comes with more sugar and less fibre. It is a concentrated source of energy, so is not ideal for weight management. It is much easier to drink a glass of orange juice (freshly squeezed) than it is to eat the four fresh oranges that went into making that juice! Despite recent trends in fruit being labelled a *baddie* in terms of sugar content, it is a natural and nutritious food. It contains little fat, and again is packed with vitamins, minerals, anti-oxidants and fibre.<sup>11</sup> Dried fruit is also a healthy choice. However, it is a concentrated source of energy (with water being removed in the drying process) and should be included in moderation.

## HOW MANY DO I NEED PER DAY?<sup>2</sup>

The minimum recommended number of serves of fruit per day can be found in the table below.

	19-50 years	51-70 years	70+ years		
Men	2	2	2		
Women	2	2	2		
Pregnant women	2	-	-		
Breastfeeding women	2	-	-		
	2-3 years	4-8 years	9-11 years	12-13 years	14-18 years
Boys	1	1 ½	2	2	2
Girls	1	1 ½	2	2	2

## WHAT IS A SERVE OF FRUIT?<sup>2,10</sup>

A standard serve is about 150g (350kJ) or:

- 1 medium apple, banana, orange or pear
- 2 small apricots, kiwifruit or plums
- 1 cup diced or canned fruit (no added sugar)

Or only occasionally:

- 125ml (½ cup) fruit juice (no added sugar)
- 30g dried fruit (e.g. 4 dried apricot halves, 1½ tablespoons of sultanas)



# Grains

There are a wide variety of grains available which are important for health. Grain foods include wheat, oats, rice, corn, barley, sorghum, rye, millet, amaranth, buckwheat and quinoa.<sup>12</sup> Each of these grains provides a network of nutritional properties including high carbohydrate, low fat, a good source of protein and varying amounts of vitamins, minerals, fibre and glycemic load. Grain-based foods make an important contribution to your nutrient intake. There is more and more emerging evidence supporting not only the role of grains in a healthy diet, but particular links with grains (specifically wholegrains) and disease protection.<sup>13-18</sup> Most Australians consume less than half the recommended quantity of wholegrain foods, but eat too much refined grain (cereal) foods. At least two-thirds of our choices should be wholegrain varieties.<sup>2</sup>

## HOW MANY DO I NEED PER DAY?<sup>2,10</sup>

The minimum recommended number of serves of grain (cereal) foods per day, mostly wholegrain and/or high cereal fibre varieties, can be found in the table below.

	19-50 years	51-70 years	70+ years		
Men	6	6	4 ½		
Women	6	4	3		
Pregnant women	8 ½	-	-		
Breastfeeding women	9	-	-		
	2-3 years	4-8 years	9-11 years	12-13 years	14-18 years
Boys	4	4	5	6	7
Girls	4	4	4	5	7

## WHAT'S A SERVE OF GRAINS?<sup>2,10</sup>

A standard serve is (500kJ) or:

- 1 slice (40g) bread
- ½ medium (40g) roll or flat bread
- ½ cup (75-120g) cooked rice, pasta, noodles, barley, buckwheat, semolina, polenta, bulgur or quinoa
- ½ cup (120g) cooked porridge cup (30g) wheat cereal flakes
- ¼ cup (30g) muesli
- 3 (35g) crispbreads
- 1 (60g) crumpet
- 1 small (35g) English muffin or scone





## Lean meat, poultry, fish, eggs and/or plant-based alternatives

Eating a variety of foods from this group provides many nutrients, including protein, iron, zinc and other minerals and vitamins (particularly those of the vitamin B group). Vitamin B<sup>12</sup> is found mainly in animal-based products.<sup>19</sup>

Lean red meat is high in iron and can be an important food, especially for some groups including women (particularly when pregnant)<sup>20</sup> and athletes. However, regular consumption of larger quantities of red meat may be associated with increased risk of colorectal (bowel) cancer.<sup>21</sup> In fact, the World Cancer Research Fund states that "red or processed meats are convincing or probable causes of some cancers."<sup>22</sup>

Fish is low in saturated fat and high in unsaturated fat and a rich source of iodine.<sup>23</sup> Fish, particularly oily fish such as salmon and tuna, can be a valuable source of essential omega-3 fatty acids. Consumption has been linked with reducing the risk of many chronic diseases and various disorders such as poor eyesight, inflammation, dementia, cardiovascular disease, depression and diabetes.<sup>24-26</sup>

Eggs provide a low cost source of protein and other nutrients, and are quick and easy to prepare.<sup>27</sup> Alternatives to animal foods, including nuts, seeds, legumes, beans and tofu, can provide a valuable, affordable source of protein and other nutrients that are found in meat.

There is increasing evidence that consuming protein from plant rather than animal sources may in fact be one of the reasons why vegetarians generally have a lower risk of being overweight, obese or experiencing chronic disease.<sup>28</sup> Including nuts as a regular component of your diet is recommended, and has been linked with regulating inflammatory processes,<sup>29</sup> improved glycemic control,<sup>30</sup> weight maintenance<sup>31</sup> and cholesterol lowering properties.<sup>32</sup>

### HOW MANY DO I NEED PER DAY?<sup>2,10</sup>

The minimum recommended number of serves of lean meats, poultry, fish, eggs, tofu, nuts and seeds, and legumes/beans per day can be found in the table below.

	19-50 years	51-70 years	70+ years	
Men	3	2 ½	2 ½	
Women	2 ½	2	2	
Pregnant women	3 ½	-	-	
Breastfeeding women	2 ½	-	-	

	2-3 years	4-8 years	9-11 years	12-13 years	14-18 years
Boys	1	1 ½	2 ½	2 ½	2 ½
Girls	1	1 ½	2 ½	2 ½	2 ½

### WHAT'S A SERVE OF LEAN MEAT, POULTRY, FISH, EGGS AND/OR PLANT-BASED ALTERNATIVES?<sup>2</sup>

A standard serve is (500–600kJ):

- 1 cup (150g) cooked or canned legumes/beans such as lentils, chick peas or split peas
- 170g tofu
- 30g nuts, seeds, peanut or almond butter or tahini or other nut or seed paste
- 2 large (120g) eggs
- 65g cooked lean red meats such as beef, lamb, veal or goat (about 90-100g raw)
- 80g cooked lean poultry such as chicken or turkey (100g raw)
- 100g cooked fish fillet (about 115g raw) or one small can of fish





## Dairy and alternatives

Dairy foods such as milk, yoghurt and cheese are well known for their calcium content. However, they also contain significant amounts of other essential nutrients such as vitamins A and B<sup>12</sup>, riboflavin, phosphorus, potassium, magnesium and zinc.<sup>33</sup> Remember to choose reduced fat and/or reduced salt varieties where possible.<sup>34</sup> Foods such as canned fish eaten with the bones (e.g. salmon), fortified soy milk, green leafy vegetables, nuts such as almonds, tofu, cereals and legumes can also be rich sources of calcium. Sesame seeds and sesame paste (tahini) have also been shown to be rich sources of calcium, particularly in vegetarians.<sup>35</sup>

### HOW MANY DO I NEED PER DAY?<sup>2</sup>

The minimum recommended number of serves of milk, yoghurt, cheese and/or alternatives per day, mostly reduced fat, can be found in the table below.

	19-50 years	51-70 years	70+ years		
Men	2 ½	2 ½	3 ½		
Women	2 ½	4	4		
Pregnant women	2 ½	-	-		
Breastfeeding women	2 ½	-	-		
	2-3 years	4-8 years	9-11 years	12-13 years	14-18 years
Boys	1 ½	2	2 ½	3 ½	3 ½
Girls	1 ½	1 ½	3	3 ½	3 ½

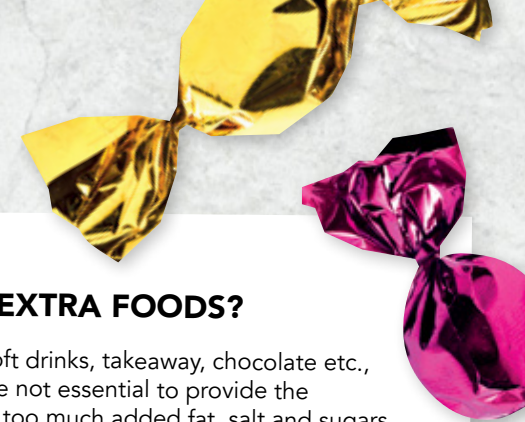
### WHAT'S A SERVE OF DAIRY?<sup>2</sup>

- A standard serve is (500–600kJ):
- 1 cup (250ml) fresh, UHT long life, reconstituted powdered milk or buttermilk
- ½ cup (120ml) evaporated milk
- 2 slices (40g) or 4 x 3 x 2cm cube (40g) of hard cheese, such as cheddar
- ½ cup (120g) ricotta cheese
- ¾ cup (200g) yoghurt
- 1 cup (250ml) soy, rice or other cereal drink with at least 100mg of added calcium per 100ml

The following foods contain about the same amount of calcium as a serve of milk, yoghurt or cheese:

- 100g almonds with skin
- 60g sardines, canned in water
- ½ cup (100g) canned pink salmon with bones
- 100g firm tofu (check the label as calcium levels vary)





## WHAT ABOUT THE OTHER OR EXTRA FOODS?

Some foods such as lollies, crisps, biscuits, soft drinks, takeaway, chocolate etc., do not fit into the main food groups. They are not essential to provide the nutrients your body needs and some contain too much added fat, salt and sugars.

These extra foods can add to the enjoyment of a healthy diet, but should only be chosen sometimes or in small amounts.

## REFERENCES

1. Saxelby C. *Nutrition for Life*. 5th ed. Victoria: Hardie Grant Books; 2006.
2. National Health & Medical Research Council. Australian Dietary Guidelines: Summary Report. 2013; <http://www.nhmrc.gov.au/guidelines/publications/n55>.
3. Australian Institute of Health and Welfare. *Australia's Food and Nutrition 2012: in brief*. Canberra: Australian Institute of Health and Welfare; 2012.
4. Liu RH. Health benefits of fruit and vegetables are from additive and synergistic combinations of phytochemicals. *Am J Clin Nutr*. Sep 2003;78(3 Suppl):517S-520S.
5. Johns T, Eyzaguirre PB. Linking biodiversity, diet and health in policy and practice. *Proc Nutr Soc*. May 2006;65(2):182-189.
6. Kaur C, Kapoor HC. Antioxidants in fruits and vegetables – the millennium's health. *International Journal of Food Science & Technology*. 2001;36(7):703-725.
7. Flock MR, Kris-Etherton PM. Dietary Guidelines for Americans 2010: implications for cardiovascular disease. *Curr Atheroscler Rep*. Dec 2011;13(6):499-507.
8. Grains and Legumes Nutrition Council. Legumes and Health. <http://www.glnc.org.au/legumes/legumes-health/>.
9. Cabrera C, Lloris F, Gimenez R, Olalla M, Lopez MC. Mineral content in legumes and nuts: contribution to the Spanish dietary intake. *Sci Total Environ*. Jun 1 2003;308(1-3):1-14.
10. Pollard CM, Nicolson C, Pulker CE, Binns CW. Translating government policy into recipes for success! Nutrition criteria promoting fruits and vegetables. *J Nutr Educ Behav*. May-Jun 2009;41(3):218-226.
11. Slavin JL, Lloyd B. Health benefits of fruits and vegetables. *Adv Nutr*. Jul 2012;3(4):506-516.
12. Flight I, Clifton P. Cereal grains and legumes in the prevention of coronary heart disease and stroke: a review of the literature. *Eur J Clin Nutr*. Oct 2006;60(10):1145-1159.
13. Djousse L, Driver JA, Gaziano JM. Relation between modifiable lifestyle factors and lifetime risk of heart failure. *JAMA*. Jul 22 2009;302(4):394-400.
14. Grains and Legumes Nutrition Council. Grains and Nutrition, Grains and Health. <http://www.glnc.org.au/grains/grains-and-health/>
15. He M, van Dam RM, Rimm E, Hu FB, Qi L. Whole-grain, cereal fiber, bran, and germ intake and the risks of all-cause and cardiovascular disease-specific mortality among women with type 2 diabetes mellitus. *Circulation*. May 25 2010;121(20):2162-2168.



## REFERENCES (CONT.)

16. Flint AJ, Hu FB, Glynn RJ, et al. Whole grains and incident hypertension in men. *Am J Clin Nutr*. Sep 2009;90(3):493-498.
17. Jonnalagadda SS, Harnack L, Liu RH, et al. Putting the whole grain puzzle together: health benefits associated with whole grains—summary of American Society for Nutrition 2010 Satellite Symposium. *J Nutr*. May 2011;141(5):1011S-1022S.
18. McKeown NM, Troy LM, Jacques PF, Hoffmann U, O'Donnell CJ, Fox CS. Whole- and refined-grain intakes are differentially associated with abdominal visceral and subcutaneous adiposity in healthy adults: the Framingham Heart Study. *Am J Clin Nutr*. Nov 2010;92(5):1165-1171.
19. Balci YI, Ergin A, Karabulut A, Polat A, Dogan M, Kucuktasci K. Serum Vitamin B12 and Folate Concentrations and the Effect of the Mediterranean Diet on Vulnerable Populations. *Pediatr Hematol Oncol*. Oct 2 2013.
20. Simpson JL, Bailey LB, Pietrzik K, Shane B, Holzgreve W. Micronutrients and women of reproductive potential: required dietary intake and consequences of dietary deficiency or excess. Part II—vitamin D, vitamin A, iron, zinc, iodine, essential fatty acids. *J Matern Fetal Neonatal Med*. Jan 2011;24(1):1-24.
21. Kim E, Coelho D, Blachier F. Review of the association between meat consumption and risk of colorectal cancer. *Nutr Res*. Dec 2013;33(12):983-994.
22. Wiseman M. The second World Cancer Research Fund/American Institute for Cancer Research expert report. Food, nutrition, physical activity, and the prevention of cancer: a global perspective. *Proc Nutr Soc*. Aug 2008;67(3):253-256.
23. Food Standards Australia New Zealand Consumer Information: Mercury in Fish 2011; <http://www.foodstandards.gov.au/consumerinformation/mercuryinfo.cfm>. Accessed March, 2013.
24. Torpy JM, Lynn C, Glass RM. JAMA patient page. Eating fish: health benefits and risks. *JAMA*. Oct 18 2006;296(15):1926.
25. Raatz SK, Silverstein JT, Jahns L, Picklo MJ. Issues of fish consumption for cardiovascular disease risk reduction. *Nutrients*. Apr 2013;5(4):1081-1097.
26. Kris-Etherton PM, Harris WS, Appel LJ. Omega-3 fatty acids and cardiovascular disease: new recommendations from the American Heart Association. *Arterioscler Thromb Vasc Biol*. Feb 1 2003;23(2):151-152.
27. Applegate E. Introduction: nutritional and functional roles of eggs in the diet. *J Am Coll Nutr*. Oct 2000;19(5 Suppl):495S-498S.
28. Marsh KA, Munn EA, Baines SK. Protein and Vegetarian Diets. *Medical Journal of Australia Open*. 2012;1(2):7-10.
29. Gopinath B, Buyken AE, Flood VM, Empson M, Roachchina E, Mitchell P. Consumption of polyunsaturated fatty acids, fish, and nuts and risk of inflammatory disease mortality. *Am J Clin Nutr*. May 2011;93(5):1073-1079.
30. Li SC, Liu YH, Liu JF, Chang WH, Chen CM, Chen CY. Almond consumption improved glycemic control and lipid profiles in patients with type 2 diabetes mellitus. *Metabolism*. Apr 2011;60(4):474-479.
31. Martinez-Gonzalez MA, Bes-Rastrollo M. Nut consumption, weight gain and obesity: Epidemiological evidence. *Nutr Metab Cardiovasc Dis*. Jun 2011;21 Suppl 1:S40-45.
32. Damasceno NR, Perez-Heras A, Serra M, et al. Crossover study of diets enriched with virgin olive oil, walnuts or almonds. Effects on lipids and other cardiovascular risk markers. *Nutr Metab Cardiovasc Dis*. Jun 2011;21 Suppl 1:S14-20.
33. Parker CE, Vivian WJ, Oddy WH, Beilin LJ, Mori TA, O'Sullivan TA. Changes in dairy food and nutrient intakes in Australian adolescents. *Nutrients*. Dec 2012;4(12):1794-1811.
34. Kai SH, Bongard V, Simon C, et al. Low-fat and high-fat dairy products are differently related to blood lipids and cardiovascular risk score. *Eur J Prev Cardiol*. Sep 3 2013.
35. Reid MA, Marsh KA, Zeuschner CL, Saunders AV, Baines SK. Meeting the nutrient reference values on a vegetarian diet. *Medical Journal of Australia Open*. 2012;1(2):33-40.

Written by Julie Hoey, Maddison Fox, Dr Darren Morton, Dr Christiana Leimena, & Dr Ross Grant.  
Edited by Christina Hawkins, Lyle Southwell, Sue Robinson, Maddison Fox & Jade Guest.

Designed by Shelley Poole.  
Course serviced by Adventist Media Network.  
Course content provided by Sanitarium Health and Wellbeing, Australasian Research Institute and Sydney Adventist Hospital.



**Sanitarium**  
health & wellbeing

**Australasian**  
Research Institute

## JULIE HOEY

BSc (Nutrition and Food Science),  
Grad Dip Dietetics, Grad Dip Ed

A qualified dietitian and science teacher, Julie loves reading the latest research into the amazing human body. With her husband and six-year old daughter, she lives on 100 acres of bush in New South Wales, and works at Avondale College of Higher Education.



## MADDISON FOX

BSc (Nutrition), Hons (Dietetics), APD, AN,  
BAppSc (Exercise and Sport Science), Sports Dietitian

Maddison is passionate about healthy food and its interaction with the health of body, mind, heart and spirit. She utilises the latest nutritional science to teach others how to create healthy food, reduce obesity and the risk of disease and chronic conditions.



## DR ROSS GRANT

PhD (NeuroPharmacology), MAppSc (Clin Chemistry)  
BEd (Sc) (Biochemistry/Chemistry)

Dr Grant is a Biochemical Pharmacologist in the School of Medical Sciences University of New South Wales, Clinical Associate Professor at the University of Sydney Medical School and Head of the Australasian Research Institute at Sydney Adventist Hospital.



## DR DARREN MORTON

PhD (Human Physiology), MAppSc (Human Movement),  
BEd (Distinction), Senior Lecturer at Avondale College of Higher Education

Darren is passionate about empowering others to live more. He has delivered hundreds of presentations on lifestyle related topics all over the world, written numerous publications and is a key presenter on the Complete Health Improvement Program (CHIP). He enjoys family time, triathlon and hang gliding.



## DR CHRISTIANA LEIMENA

PhD (Cell Biology and Inherited Heart Disease),  
BSc Hons (Biomedical Science)

As a medical science researcher, Christiana has worked in the field of inherited heart disease for over a decade, and continues to research the latest in medical health. Christiana loves to be active in the outdoors and is passionate in sharing with others on how to live a healthy, abundant life, both physically and spiritually.





## 1 LIVING WELL

WELCOME TO THE START OF GREAT HEALTH



## 2 GOOD EATING

ESSENTIALS OF CHOOSING HEALTHY FOOD

## 3 A HEALTHY HEART?

UNDERSTANDING CARDIOVASCULAR DISEASE

## 4 SUGAR ISSUES

PREVENTING & REVERSING DIABETES

## 5 THE SILENT KILLER

WHAT WE DO KNOW ABOUT CANCER

## 6 PLANTS & FATS

EXPLORING PLANT-BASED DIETS

## 7 STAYING IN CONTROL

HOW TO MAINTAIN A HEALTHY WEIGHT

## 8 MOVING WELL

HOW TO MOVE SMART

## 9 LESS IS MORE

ALL ABOUT ALCOHOL & CAFFEINE

## 10 WATER & SLEEP

WHY HYDRATION & REST ARE UNDERRATED

## 11 SUNSHINE & BUGS

SUNLIGHT & INTESTINAL BACTERIA

## 12 FEELING GOOD

KEYS TO EMOTIONAL HEALTH

## 13 LIVING IN FREEDOM

CARING FOR YOUR SPIRITUAL WELLBEING